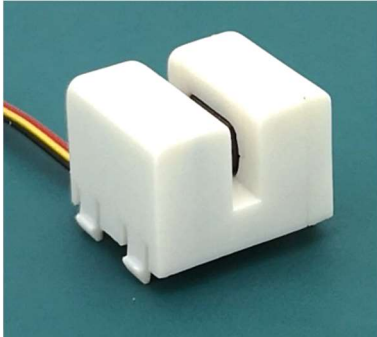


Infusion pump sensor



Performance

Force range(FS)	300 gram
Excitation	5Vdc
Sensitivity, ±1%	10mV/gram
Zero offset(@25°C)	0.8V ±5%FS
Repeatability	1% FS
Nonlinearity(BFSL).....	±1% FS
Hysteresis	±0.5% FS

Environmental

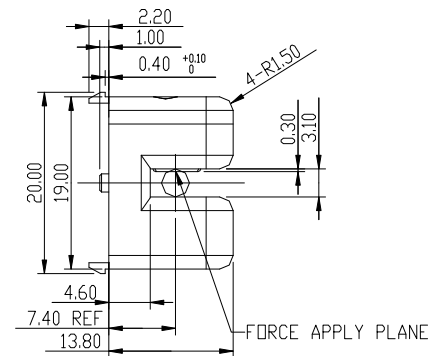
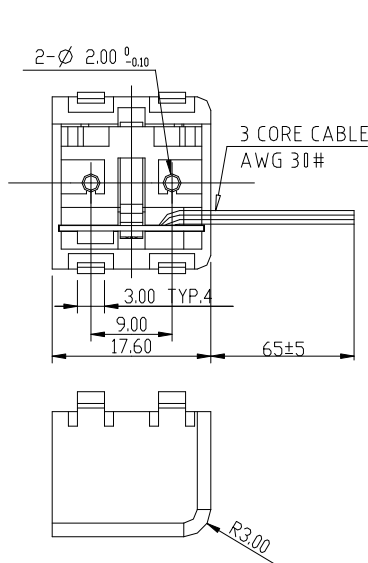
Storage temperature	-40 to 85°C
Operate temperature	0 to 50°C
Operate humidity	0 to 95%RH
Temperature zero shift.....	±3% FS/10°C
Temperature sensitivity shift.....	±2%/10°C
Safe overload	1000 gram
Insulation resistance(@250Vdc)	>50MΩ

Features

- Compact size
- Non cut-in application
- Integrated amplifier
- Different tube applicable
- Different range available
- Bubble detect by option
- Unique force to pressure convert technology

Application

- Infusion pump pressure
- Medical device
- Physical therapy devices
- Hand tool forces
- Exercise equipment
- Process control equipment



ELECTRONIC CONNECTION:

RED: +5V

YELLOW: OUTPUT

BLACK: GROUND

Ordering Information

F1101E-300G

Force range: 300 gram
Signal output: 0.5~4.5V

