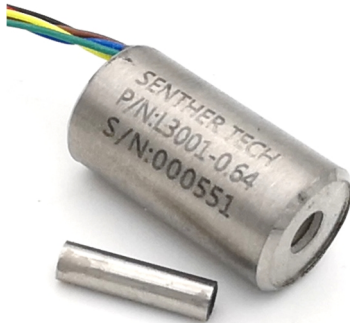


LVDT position transducer



Features

- High Resolution
- High output signal
- Shock resistant
- Compact size
- Light weight
- Reliability package

Sensitivity, $\pm 10\%$, 24°C 172 mV/V/mm
 Measuring range(mm) ± 0.64
 Nonlinearity(@50% Stroke)..... <0.15% Max.
 Nonlinearity(@100% Stroke)..... <0.25% Max.

Electrical

Power excitation(@2.5KHz) 3 Vrms
 Output Impedance..... <100 Ω
 Insulation resistance(@500Vdc)..... >10 M Ω
 Null voltage..... <0.5% FSO
 Repeatability..... <0.15%
 Output at stroke ends..... 109 mV/V

Environmental

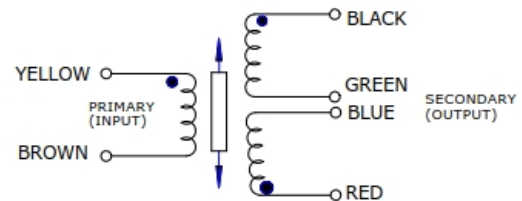
Temperature range..... -55 to 125°C
 Operation humidity..... <85% R.H
 Shock limit..... 1,000 g peak
 IEC 60529 rating..... IP61

Physical

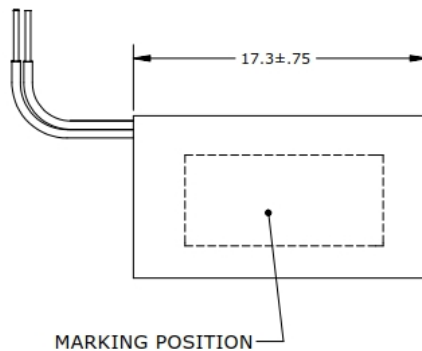
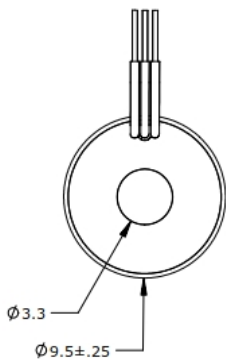
Sensing element..... LVDT
 Output cable(32# AWG)..... 0.4m PFA Insulation
 Case material..... Stainless steel

Accessories

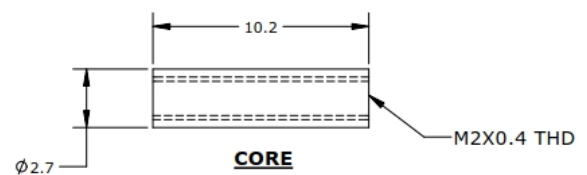
Calibration certificate



WIRING SHECMATIC
 CONNECT GRN&BLU FOR
 DIFFERENTIAL OUTPUT



LVDT



Ordering Information

